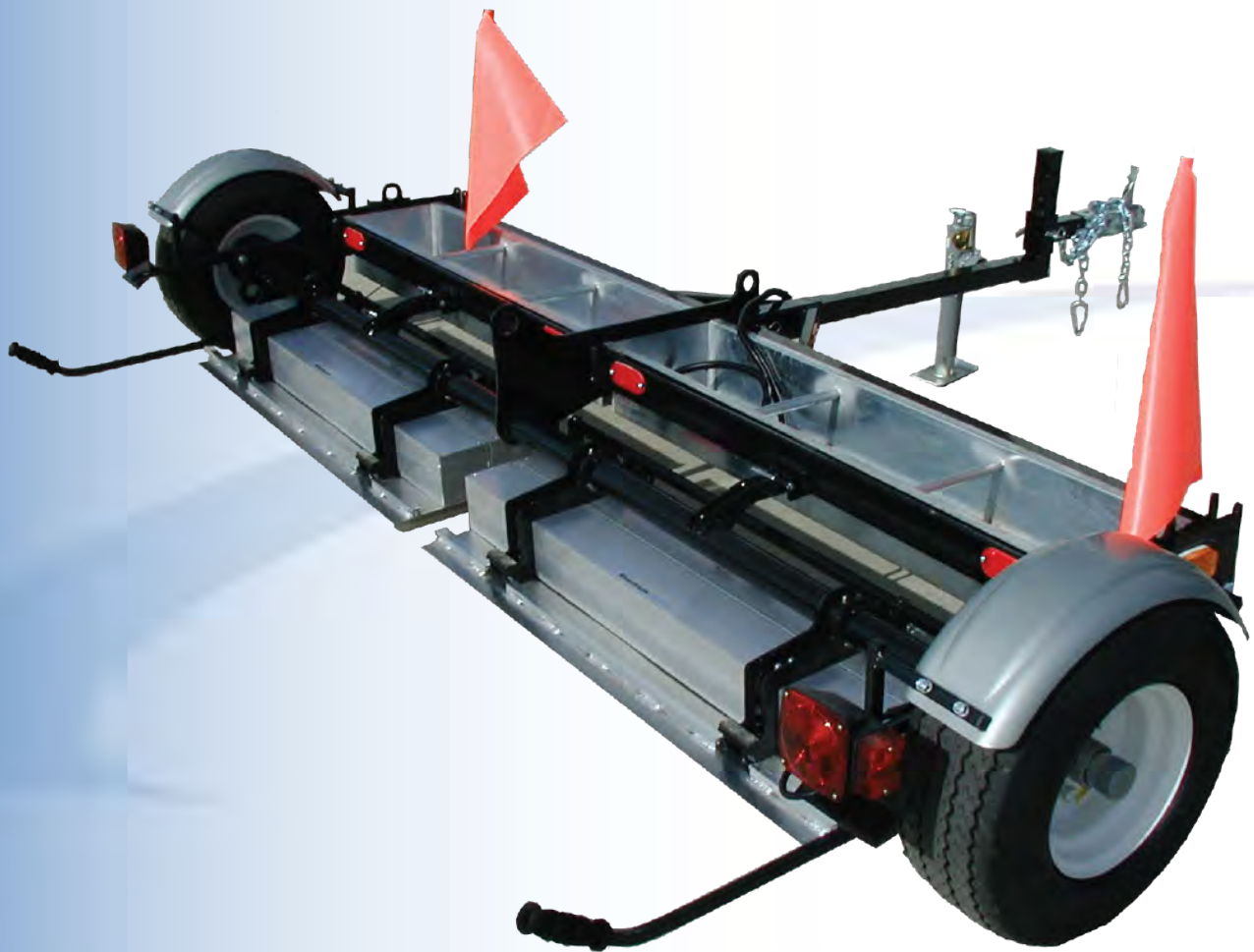


Assembly Instructions

Lights & Fenders

Piranha



 **Bluestreak**equipment
The world's best magnetic cleaning equipment

Bluestreak Equipment
1645 Hwy #3, Delhi
Ontario, Canada
N4B2W6

The Following Instructions Assume:

A) The Assembly of the Piranha is already complete as per the Piranha Assembly Instructions.pdf

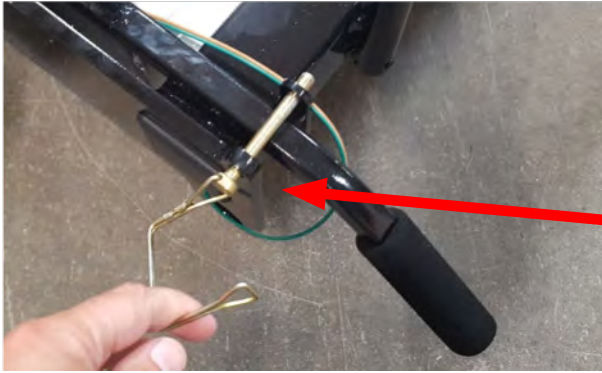
And

B) The Lights and Fenders Package Accessory was purchased and shipped with your Piranha Magnetic Sweeper



Piranha 

Step 1. Prepare To Lower The Magnet



Prepare to place the sweeper into sweeping position by removing the spring clip holding the handle down.

Step 2. Lower Magnet



Pull up on the handle and flip the magnet over into the sweeping position.



Step 3. Secure Magnet In Sweeping Position



Secure the magnet in the sweeping position by inserting the spring clip (removed in Step #1) into the slot as shown.

Repeat steps 1 , 2 and 3 for the opposite side of the sweeper

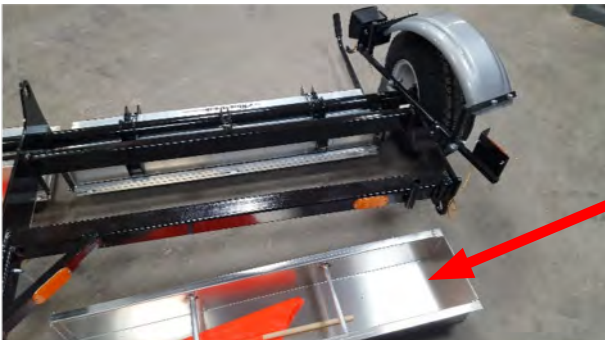
Step 4. Unpack Fender Assembly



Set the fender assembly on the wheel.

Repeat for opposite side.

Step 5. Remove Debris Bin



Remove the Aluminum Debris Bin.

Repeat for opposite side

Piranha 

Step 6. Remove Hardware From Fender Assembly



Remove the bolts (x2) washers (x6) and nuts (x2) from the fender assembly.

Repeat for opposite side.

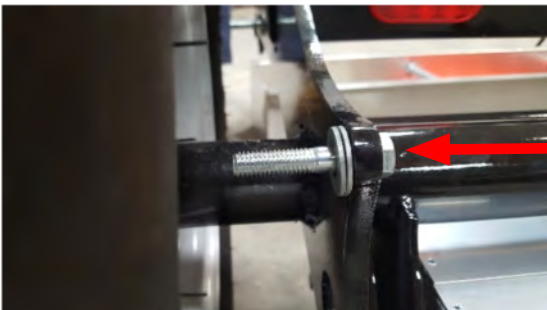
Step 7. Insert Bolts



Insert the Bolts from the inside of the frame of the Piranha Sweeper.

Repeat for the Opposite Side.

Step 8. Install Washers



Install 2 Washers on Each Bolt

Repeat for opposite side.



Step 9. Install Fender Assembly



Install Fender Assembly over Bolts.

Repeat for opposite side.

Step 10. Install Washer & Nut



Install 1 washer and 1 Nut on each Bolt and tighten firmly with 9/16" wrenches.

Repeat for opposite side.



Step 11. Re-install Debris Bin

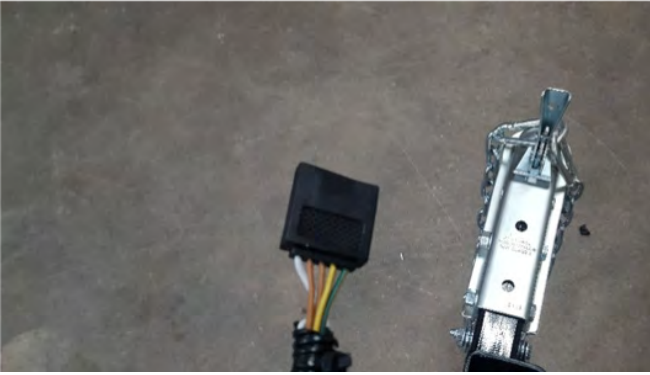


Reinstall Aluminum Debris Bins

Assembly Now Complete



Additional Information



The Lights and Fenders Package comes standard with a 12 volt, 4 flat wire plug.

If this plug or an adaptor is not available for your tow vehicle use the following wire colors to rewire the appropriate plug.

Green Wire = Right side Stop/Turn

Yellow Wire = Left Side Stop/Turn

(Right and Left side are determined by looking at sweeper from behind)

Brown Wire = Tail Lights

White Wire = Ground



Bluestreak Equipment • 1645 Hwy #3 • Delhi • Ontario • Canada • N4B2W6
www.blustreakequipment.com