

Assembly Instructions

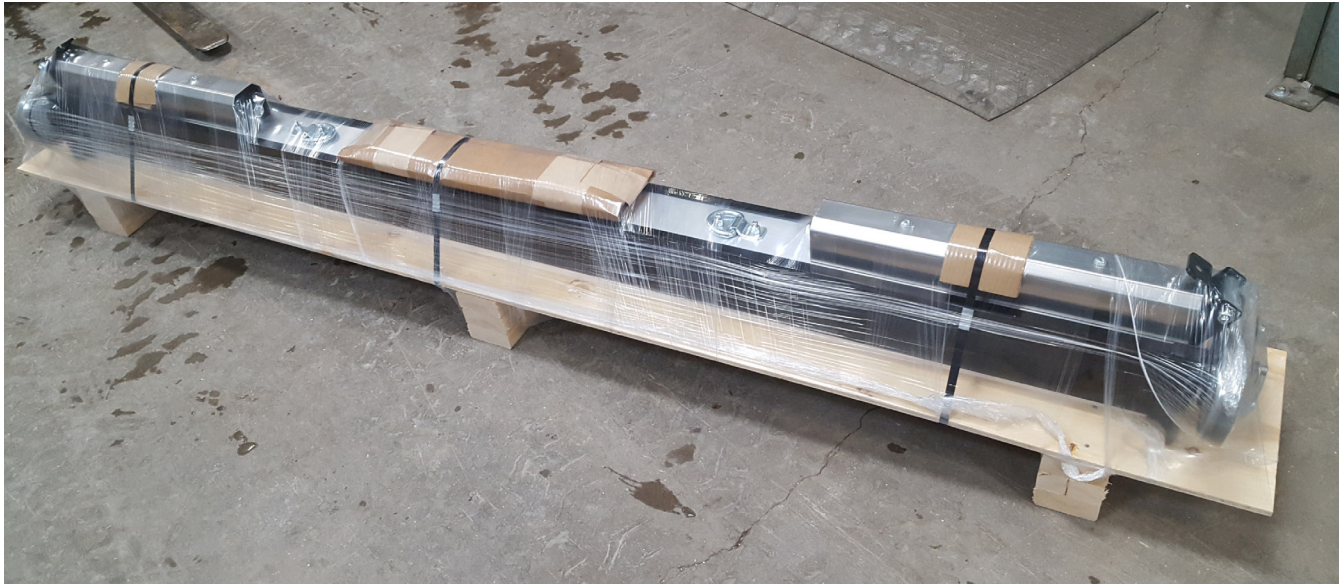
ISO 



 **Bluestreak**equipment MAGNETICS
APPLICATION DRIVEN DESIGN

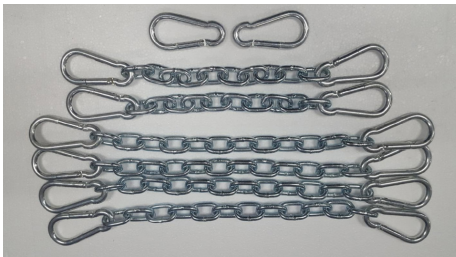
Bluestreak Equipment
1645 Hwy #3, Delhi, Ontario, Canada N4B 2W6

What's On the Pallet



List of items on the pallet:

- 1pc ISO Magnetic Sweeper fully assembled and ready to mount to vehicle
- 20pcs hanging kit chains - (kit includes 4 longer changes and 2 shorter chains and 14 quick clips)



20 pcs - hanging kit chains



1 pc - ISO Magnetic Sweeper

IMPORTANT: The ISO wheel assemblies that are attached on the ends of the sweeper are shipped in an upside down position. Before using the sweeper, the wheel assembly on each end needs to be removed and flipped so the wheels extend down past the bottom of the sweeper as shown in the photo to the right.



What's NOT On the Pallet

- 1 suspension mounting bracket (if required)

Mounting Requirements

To accommodate mounting the ISO to a vehicle it may or may not be necessary for the purchaser to buy one or more of the hanging bracket accessories offered by Bluestreak or design and build a custom suspension mounting bracket. If the vehicle already has mounting points a special mounting bracket may not be necessary.

If building a suspension mounting bracket it should have mounting points specific to those available on the vehicle so that the bracket can mount to the vehicle.

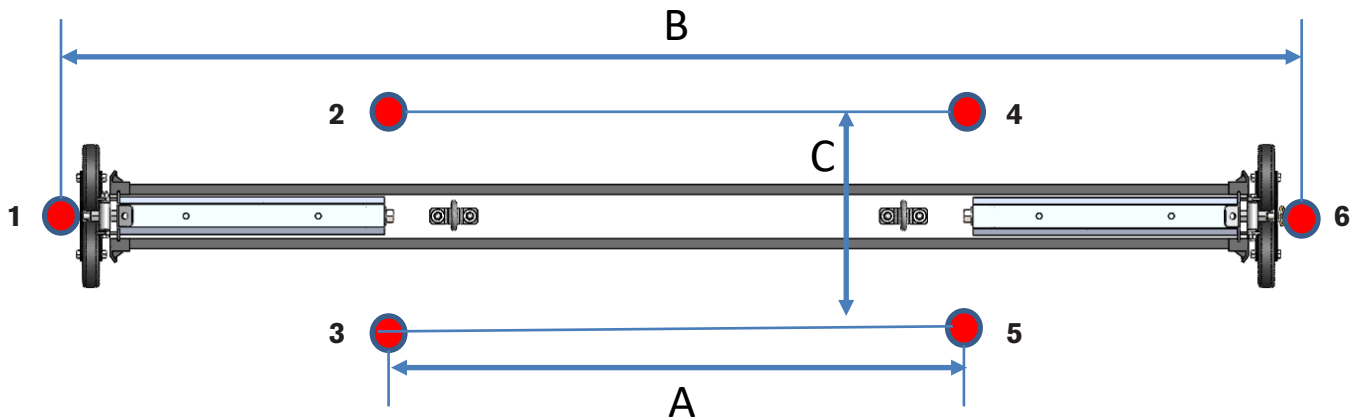
The suspension mounting bracket should also have mounting points specific to the ISO. These specifications are given in the next section.

Example custom suspension mounting bracket



The ISO Mounting Points

The custom suspension mounting bracket should have 6 mounting point locations for the ISO. The optimal dimensions between suspension points for each sweeper size are in the table below. These dimensions will provide chain angles that keep the unit in a stable position when operating.



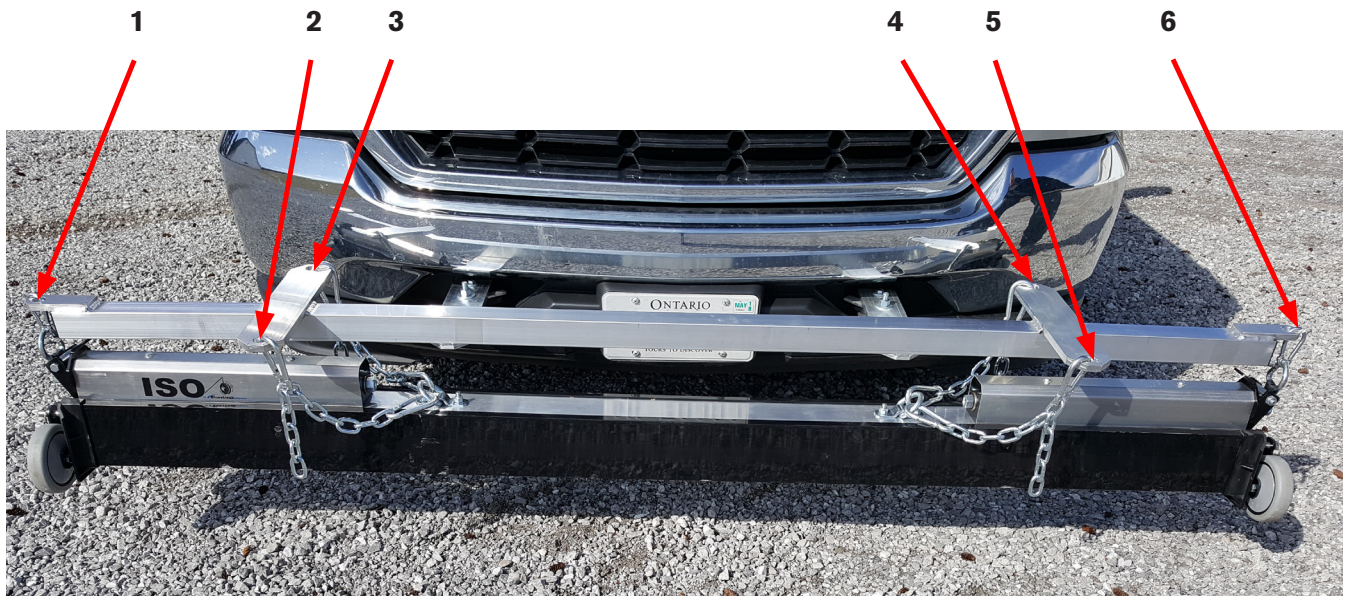
Optimal Dimensions between Suspension Mounting Points

Model	Dimension A (inches)	Dimension B (inches)	Dimension C (inches)
ISO 62"	22"	64"	12.5"
ISO 74"	34"	76"	12.5"
ISO 86"	46"	88"	12.5"
ISO 98"	58"	100"	12.5"

Suspension Mounting Bracket

Example of suspension mounting bracket

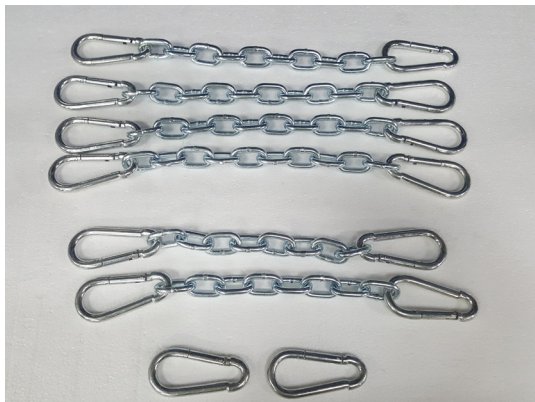
Below is an example of a custom suspension mounting bracket fit to a vehicle with 6 suspension mounting points in optimal locations for the ISO.



Attaching the ISO

Attaching the ISO to the mounting bracket

The ISO comes with 6 hanging chains and 14 quick clips. These will be used to attach the ISO to the mounting bracket.



Hanging kit chains

The ISO has 6 attachment locations:

- 2 magnet D-ring locations
- 2 optional end point locations
- 2 adjuster strap D-ring locations

Magnet D-ring location: use the 2 longer chains and quick clips to attach the ISO at the D-ring location. Do this 2 times on each D-ring.

Optional end point location: use the 2 shorter chains and clips to provide further stabilization at the ends of the sweeper.

Adjuster strap D-ring location: use the remaining 2 single quick clips to attach the ISO at the adjuster strap D-ring located on both ends of the ISO.



Adjuster strap D-ring location

Optional end point locations

Magnet D-ring Location

Adjuster strap D-ring location

Optional end point locations

Magnet D-ring location

Bluestreak Equipment • 1645 Hwy #3, Delhi, Ontario, Canada N4B 2W6

www.blustreakequipment.com