

# Assembly Instructions

**CAIMAN**



**Bluestreak**equipment  
The world's best magnetic cleaning equipment

Bluestreak Equipment  
1645 Hwy #3, Delhi  
Ontario, Canada  
N4B2W6

## How it Ships

The Caiman Magnetic Sweeper is packaged and shipped on One pallet. When shipped internationally the Caiman is shipped in a ISPM-15 compliant international steel framed crate.



## Step 1. Remove Shrink Wrap

Remove Shrink Wrap, Strapping, and Cardboard from the pallet



## Step 2. Unpackage All Items from the Pallet



Unpackage all items from the pallet and cardboard box.

- A – Wheels (2pcs)
- B – Jack (1pc)
- C – Coupler Assembly (1pc)
- D – Toplink (1pc)/Adjuster Rod (1pc)
- E – Bolt Bag (containing TopLink hardware) (1pc)
- F – Axle Pins (3 pcs) and Clips (3pcs)
- G – Bent Pins (2pcs)
- H – Rear Wheel Adjustment Frame (1pc)
- I – Release Handles (2pcs)
- J – Steel Tongue(1pc)



## Step 3. Remove Wooden Blocks



Remove the wooden blocks from backside of the Caiman magnetic sweeper.

## Step 4. Slide Caiman to Back Edge of Pallet



Slide the Caiman Magnetic Sweeper to the back edge of the pallet.

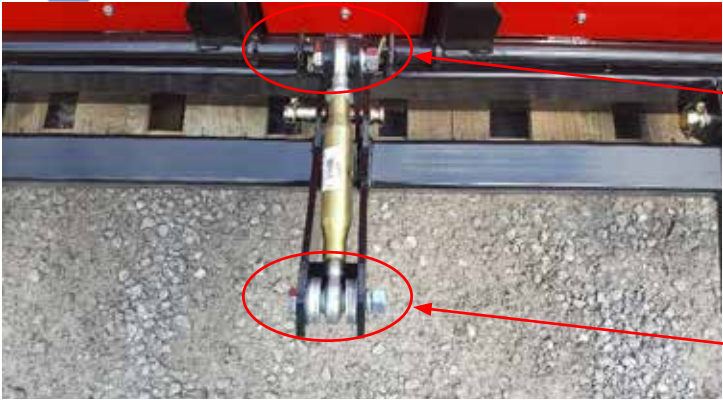
## Step 5. Connect Rear Wheel Adjustment Frame



Connect Rear Wheel Adjustment Frame to the Sweepers Main Frame by inserting the 3 Axle Pins and Clips.



## Step 6. Connect the TopLink



Front Connection (see Step 7)

Connect the Front and Rear of the Top Link to the Main Frame and Rear Wheel Adjustment Frame using the hardware in the bolt bag. See next Steps for further details.

Rear Connection (see Step 8)

## Step 7. Top Link Front Connection

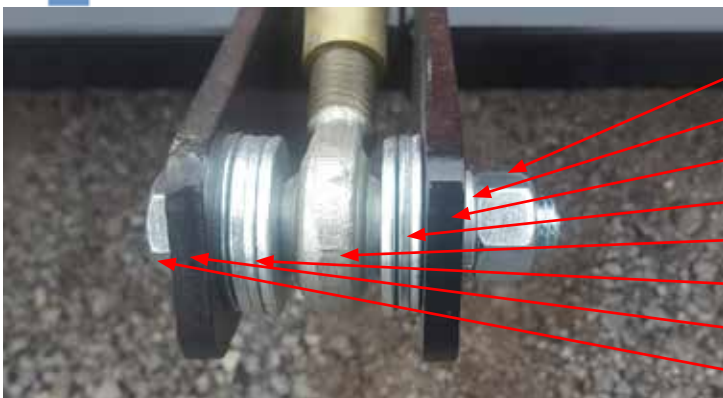
Top Link Front Connection - Install one end of the Top Link (the end with the locking nut on it) as shown and tighten firmly with 2x 15/16" wrenches.



- f) Nut
- e) Lock Washer
- d) Painted Steel Upright
- c) Top Link
- b) Painted Steel Upright
- a) 5/8" x 2.5" Bolt
- Locking Nut

## Step 8. Top Link Rear Connection

Top Link Rear Connection - Install the other end of the Top Link as shown and tighten firmly with 2x 15/16" wrenches.



- h) Nut
- g) Lock Washer
- f) Painted Steel Tab
- e) 3 Washers
- d) Top Link
- c) 4 Washers
- b) Painted Steel Tab
- a) 5/8" x 3.5" Long Bolt



## Step 9. Remove Wheel Bolts



Remove Wheel Bolts from Spindle.  
Repeat on opposite side.

## Step 10. Install Wheels



Install wheel with valve stem Facing out.  
Tighten Wheel bolts using 13/16 Socket.  
Repeat on opposite side.

## Step 11. Install Release Handles



Install Release Handles on each end of the sweeper by removing the bolts that come in the handles, position the handle as shown and install and tighten bolts using a 9/16 Wrench.

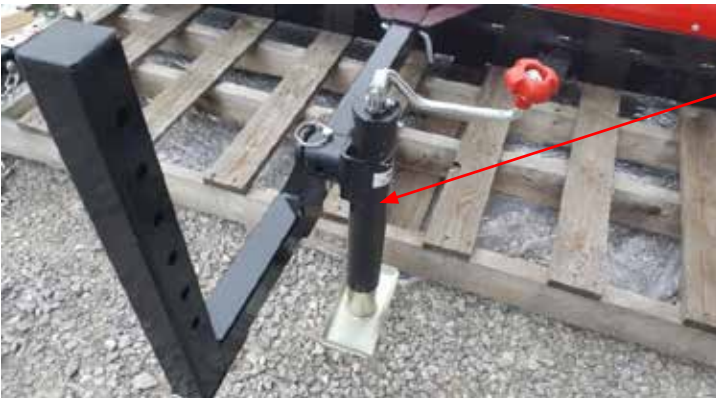


## Step 12. Install Steel Tongue



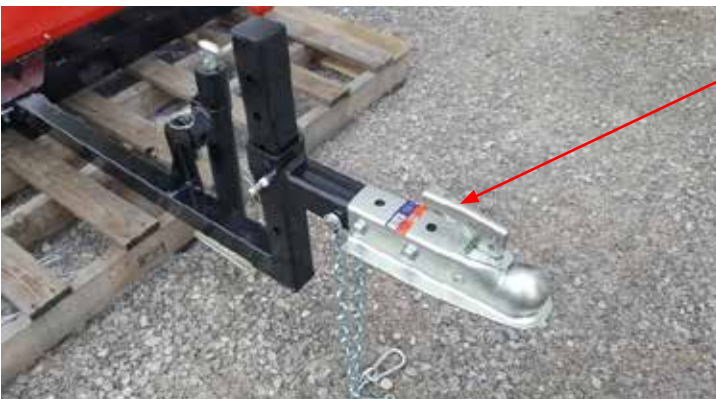
Insert Steel Tongue into the Caiman magnetic sweeper.  
Insert a Bent Pin and Clip.  
To secure Steel Tongue in Place.

## Step 13. Install Jack



Install the Jack onto the Steel Tongue.

## Step 14. Install Coupler Assembly



Install Coupler Assembly at the end of the Steel Tongue and insert a Bent Pin and clip to secure.



## Step 15. Remove Caiman from Pallet



Remove the Caiman Magnetic Sweeper from the pallet.  
The Assembly of the Caiman is now Complete!





---

Bluestreak Equipment • 1645 Hwy #3 • Delhi • Ontario • Canada • N4B2W6  
[www.blustreakequipment.com](http://www.blustreakequipment.com)